

Learn more about the NIHR Postdoctoral Award

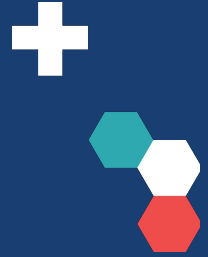


We will be broadcasting shortly

A live Q&A will be held at the end of the webinar
Please submit your questions via the Q&A function
Please note that this session will be recorded



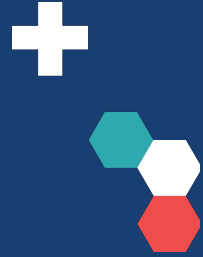
Housekeeping



- Your mics are muted and videos are off but you can communicate via chat and Q&A features
- You can turn on the live transcript by clicking on the 'live transcript' button and then selecting 'show subtitle'
- You may send in questions by clicking on the Q&A button and identify those you'd like to have answered by clicking the thumb icon



The NIHR Postdoctoral Award



NIHR Academy simplified offering at postdoctoral level



NIHR staff will stream your application to the correct funding committee based on your professional background and research setting.

Postdoctoral Award

Salaried time to undertake funded post-doctoral research and a bespoke training and development programme

You can apply for the award if you:

- have recently completed or are soon to be awarded a PhD but have not yet established yourself as an independent researcher.
- are beginning to establish yourself as an independent researcher, or you are already independent, but you are not yet recognised as an international leader in your field.
- are looking to transition into applied health or social care research from a basic science or non-health or care research background
- are returning to research after a significant career break.

Funding and support

- Funding for salary, research activities, conference attendance, and training and development
- Awards have a duration of between 2 and 5 years (between 50 and 100% WTE)
- Recipients are permitted to apply for a second Post-Doctoral Award, but the total duration of support is limited to 8 years WTE

Practice Time: Active clinician or practitioner applicants, or those employed in a local authority setting have the option to request up to 40% of your time to be dedicated to professional practice time and professional training and development, which will be covered by the award.

Application windows open twice annually, in the spring and autumn

Applications are welcome from all, one of our 3 Postdoctoral Award funding committees, each with a particular focus, will assess your application if it is eligible:

- Local authorities, social care and public health
- Health and care professionals (excluding doctors and dentists)
- Other postdoctoral research and researchers (including doctors and dentists)

New NIHR Awards Management System



Registered users

Please log in to access your account.

[Forgot Password?](#)

[Learn more about our](#)

[Privacy & Security policies](#)

[New to the System?](#)

[Register](#)

NIHR Awards Management System.

Welcome to the NIHR Awards Management System. New NIHR funding opportunities launching from 27th November 2024 are managed in this system. For more information please visit our [improving the researcher experience](#) page.

This NIHR system is for people who want to:

- Apply for NIHR funding
- Manage funding applications and awards
- Attend meetings and committees
- Take part in reviewing NIHR activities including applications

For programme information access the [NIHR website](#).

For technical support email us at [Awards Management Help](#).

See our [Accessibility statement](#).

<https://awardsmanagement.nihr.ac.uk/>

What is available through a Postdoctoral Award?

Salaried time to undertake funded post-doctoral research and a bespoke training and development programme

You can apply for the award if you:

- have recently completed or are soon to be awarded a PhD but have not yet established yourself as an independent researcher.
- are beginning to establish yourself as an independent researcher, or you are already independent, but you are not yet recognised as an international leader in your field.
- are looking to transition into applied health or social care research from a basic science or non-health or care research background
- are returning to research after a significant career break.

Funding and support

- Funding for salary, research activities, conference attendance, and training and development
- Awards have a duration of between 2 and 5 years (between 50 and 100% WTE)
- Recipients are permitted to apply for a second Post-Doctoral Award, but the total duration of support is limited to 8 years WTE

Practice Time: Active clinician or practitioner applicants, or those employed in a local authority setting have the option to request up to 40% of your time to be dedicated to professional practice time and professional training and development, which will be covered by the award.

Application windows open twice annually, in the spring and autumn

Applications are welcome from all, one of our 3 Postdoctoral Award funding committees, each with a particular focus, will assess your application if it is eligible:

- Local authorities, social care and public health
- Health and care professionals (excluding doctors and dentists)
- Other postdoctoral research and researchers (including doctors and dentists)

Postdoctoral Award Funding

Between 2 and 5 years in whole month increments.

It can be taken on a part-time basis between 50% and 100% Whole Time Equivalent (WTE).

- salary of the award holder
- research project costs (including dissemination & open access costs)
- funding for a support post (including up to £3,000 for their training and development)
- the cost of a tailored academic and professional development programme
- an annual conference budget (£2000 per year)

Clinical or practitioner applicants or applicants employed in a local authority setting can request up to 40% of their time to be dedicated to clinical service/development, which will be covered by the award.

Postdoctoral Award Cohort 1 key dates

Applications opened: 26th March 2025

Applications close: 1pm 3rd July 2025

Interviews: January - February 2026

Start dates: April 2026 – September 2026 (1st of month)

Application windows open twice annually, in the spring and autumn

Charity Partnership Awards

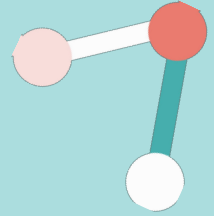
The NIHR partners with charities to offer jointly-funded awards.

These provide the awardee with the support of two funders, becoming part of two research communities to support their award and next career steps.

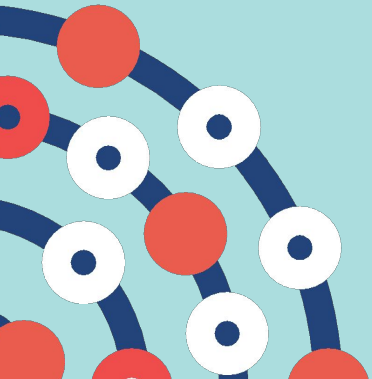
Each application goes through the same review process as other applications made in the round. If it is deemed fundable by the Funding Committee, the NIHR and charity co-fund the award OR the NIHR funds the whole award.

THE COLT
FOUNDATION





What needs to be included in my
application?



Contracting & Partner Organisations



<https://www.nihr.ac.uk/career-development/nihr-academy/apply-nihr-career-development-awards/choosing-contracting-organisation-career-development-awards>
<https://www.nihr.ac.uk/what-consider-when-choosing-your-host-organisation-nihr-personal-award-clinicalpractitioner-academic>

Your career so far

- Contextual factors

Narrative CV

- Research outputs
- Career to date
 - Research
 - Practice / clinical (HCP and local authorities)

Your award plans

- Detailed research plan
- Working with people and communities
- Research inclusion
- Training and development programme

NIHR Academy Remit for Personal Awards

The overall remit of the NIHR is early translational (experimental medicine), clinical and applied health research, and social care research.

- Proposals must have clear potential for directly benefiting patients/service users, carers and the public (but recognising the training element of the research)
- Proposals can involve: patients/service users and/or carers; samples or data from these groups; other people who are not patients/service users and/or carers; populations; health technology assessment; or health or care services research

Doctoral awards: Early translational (experimental medicine) research is **not within remit**.

Postdoctoral awards: Early translational (experimental medicine) research **is within remit**. A clear and plausible path to patient /service user, carer or public benefit must, however, be demonstrable.

NIHR does not support basic research or work involving animals or their tissue.

NIHR will support high quality **educational research** and **methodological research**. It is expected that the research will have the potential to have practical application and the potential impact on patients/service users, carers and the public must be made clear.

Your support team

- Mentors
- Clinical and practitioner applicants can also include practice mentorship/supervision
- Heads of departments

Your budget

- Review guidance in full
- Know the budget caps
- Support from your finance team

<https://www.nihr.ac.uk/research-funding/application-support/guidance/finance-guidance-for-applicants>

Expectations of the Postdoctoral Award Committees

Chairs of the Funding Committees

Professor Umesh Kadam (Postdoctoral Committee Co-Chair)

Professor of General Practice and Public Health Research
University of Exeter

Professor Eileen Kaner (Postdoctoral Committee Co-Chair)

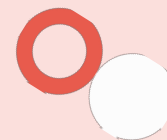
Professor of Public Health and Primary Care Research
University of Newcastle

Professor Rachel Elliott (Health and Care Professionals Committee Chair)

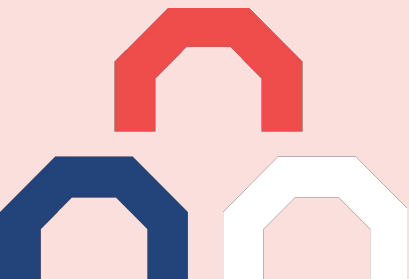
Professor of Health Economics
University of Manchester

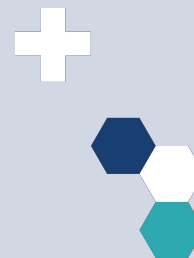
Professor Ashley Adamson (Local Authority, Social Care and Public Health Committee Chair)

Professor of Public Health Nutrition and NIHR Research Professor
University of Newcastle

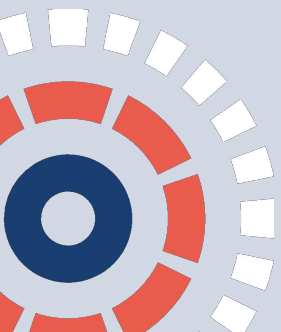


Q&A





Find out more



Do you want to find out more?

Learn more about NIHR Career
Development opportunities



Learn more about
NIHR Academy



Keep in touch

- Email: personal.awards@nihr.ac.uk
- Call us on 0113 532 8410
- Follow us on X: @NIHRResearch
- Follow us on LinkedIn: <https://www.linkedin.com/showcase/nihr-community/>
- Receive NIHR newsletters, including funding alerts, by signing up at <https://nihr.us14.list-manage.com/subscribe?id=570d86f9cb&u=299dc02111e8a68172029095f>

Postdoctoral Award Key Differences Summary

Professional doctorates

- Where applicable Professional Doctorates can be considered from all applicants, please contact us before starting your application.

Professional clinical or practice time

Active clinician or practitioner applicants, or those employed in a local authority setting, have the option to request up to 40% of award time to be dedicated to professional practice and professional training and development, which will be covered by the award.

- Training plan
 - You may include professional training or clinical development in your training plan
- Partner Organisations
 - If the award includes practice or clinical time to be undertaken at an organisation that is not the contracting organisation then a partner organisation is required
- Mentors
 - If the award includes practice or clinical time at least 1 'practice supervisor' should be added to the application

2 attempt rule reset

- Unsuccessful applicants to our predecessor schemes (AF/ACAF/ALAF) don't have to wait 3 years before trying again; however, you should still wait 12 months from your last submission until your next

Sequential Awards

- Current predecessor scheme awardees (AF/ACAF/ALAF) can apply for a postdoctoral award, the combined duration of both awards must not exceed 8 years FTE