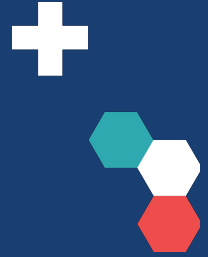


Learn more about the simplified NIHR Doctoral Award

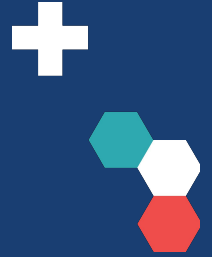


We will be broadcasting shortly

A live Q&A will be held at the end of the webinar
Please submit your questions via the Q&A function
Please note that this session will be recorded

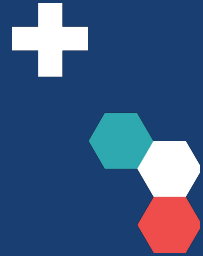


Housekeeping



- Your mics are muted and videos are off but you can communicate via chat and Q&A features
- You can turn on the live transcript by clicking on the 'live transcript' button and then selecting 'show subtitle'
- You may send in questions by clicking on the Q&A button and identify those you'd like to have answered by clicking the thumb icon





The NIHR Doctoral Award



NIHR Academy - Simplified Offering at Doctoral Level



NIHR staff will stream your application to the correct funding committee based on your professional background and research setting.

Doctoral Award

Salaried time to undertake a funded PhD by research in health and care research.

- Research proposals must fall within **NIHR's Remit for Personal Awards**.
- Clinicians/Practitioners and those based in LA settings have the **option** to include 20% funded clinical/practice time within the award.

Applicants must:

- hold a 1st or 2:1 bachelor's degree, or equivalent (*if not, you will usually need to have a master's degree*)
- have prior research experience or training to prepare for a PhD
- not already hold a PhD by research
- propose substantive employment with a recognised Higher Education Institution (HEI), NHS body, local authority, or other publicly/third-sector funded health or social care provider in England
- register for a PhD at a recognised HEI in England, if you are not already enrolled (*if already registered, you must not have been enrolled for more than 12 months full-time by the award start date*)
- propose research within our remit for personal career development awards

NIHR Academy Remit for Personal Awards

The overall remit of the NIHR is early translational (experimental medicine), clinical and applied health research, and social care research.

- Proposals must have clear potential for directly benefiting patients/service users, carers and the public (but recognising the training element of the research)
- Proposals can involve: patients/service users and/or carers; samples or data from these groups; other people who are not patients/service users and/or carers; populations; health technology assessment; or health or care services research

Doctoral awards: Early translational (experimental medicine) research is **not within remit**.

Postdoctoral awards: Early translational (experimental medicine) research **is within remit**. A clear and plausible path to patient /service user, carer or public benefit must, however, be demonstrable.

NIHR does not support basic research or work involving animals or their tissue.

NIHR will support high quality **educational research** and **methodological research**. It is expected that the research will have the potential to have practical application and the potential impact on patients/service users, carers and the public must be made clear.

Doctoral Award

Funding and support:

- 3 years WTE (and can be taken up between 0.5 and 1.0% WTE).
- Funding for salary, research, working with people and communities costs and training and development costs, including £3000 conference-related costs and full PhD fees.
- Can apply for co-funding with charity partners.

Charity Partnership Awards

The NIHR partners with charities to offer jointly-funded awards.

These provide the awardee with the support of two funders, becoming part of two research communities to support their award and next career steps.

Each application goes through the same review process as other applications made in the round. If it is deemed fundable by the Funding Committee, the NIHR and charity co-fund the award OR the NIHR funds the whole award.



Invitations for applications

New NIHR Awards Management System



Registered users

Please log in to access your account.

[Forgot Password?](#)

Learn more about our

[Privacy & Security policies](#)

New to the System?

[Register](#)

NIHR Awards Management System.

Welcome to the NIHR Awards Management System. New NIHR funding opportunities launching from 27th November 2024 are managed in this system. For more information please visit our [improving the researcher experience](#) page.

This NIHR system is for people who want to:

- Apply for NIHR funding
- Manage funding applications and awards
- Attend meetings and committees
- Take part in reviewing NIHR activities including applications

For programme information access the [NIHR website](#).

For technical support email us at [Awards Management Help](#).

See our [Accessibility statement](#).

<https://awardsmanagement.nihr.ac.uk/>

Application Process



Doctoral Award - Round 1 Key Dates

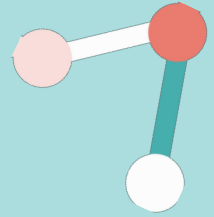
Applications opened: 9th April 2025

Applications close: 1pm 10th June 2025

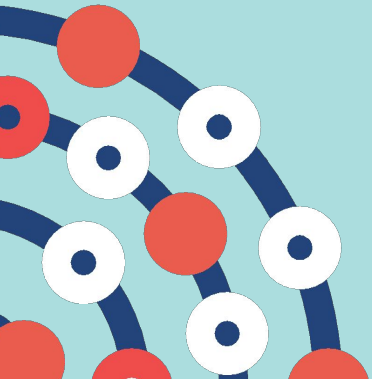
Interviews: November 2025

Start dates: April 2026 – September 2026 (1st of month)

Application windows open twice annually, in the spring and autumn



What needs to be included in my application?



Contracting & Partner Organisations



<https://www.nihr.ac.uk/career-development/nihr-academy/apply-nihr-career-development-awards/choosing-contracting-organisation-career-development-awards>
<https://www.nihr.ac.uk/what-consider-when-choosing-your-host-organisation-nihr-personal-award-clinicalpractitioner-academic>

Your career so far

- Contextual factors

Narrative CV

- Research outputs
- Career to date
 - Research
 - Practice/clinical (HCP and local authorities)

Your award plans

- Detailed research plan
- Working with people and communities
- Research inclusion
- Training and development programme

Your support team

- Supervisors
- Clinical and practitioner applicants can also include practice supervision
- Heads of Departments

Your budget

- Review guidance in full
- Know the budget caps
- Support from your finance team

<https://www.nihr.ac.uk/research-funding/application-support/guidance/finance-guidance-for-applicants>

Expectations of the Doctoral Award Committees

Chairs of the Funding Committees

Professor Judith Rankin (Doctoral Committee Chair)

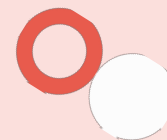
Professor of Maternal and Child Health at Newcastle University

Professor Avril Drummond (Health and Care Professionals Committee Chair)

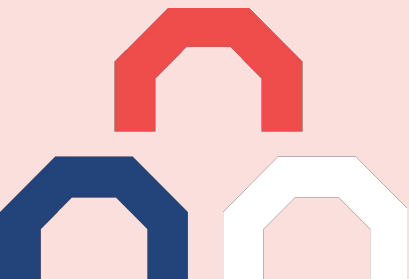
Professor of Healthcare Research and Lead for Rehabilitation Research Group at University of Nottingham

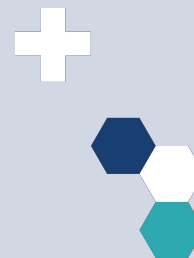
Professor Jon Glasby (Local Authority, Social Care and Public Health Committee Chair)

Professor of Health and Social Care at the University of Birmingham and Director of [IMPACT](#), the UK centre for implementing evidence in adult social care.

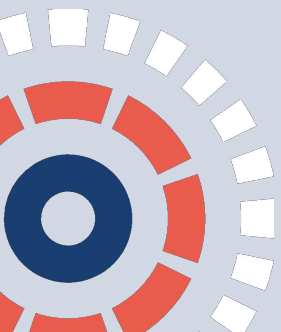


Q&A





Find out more



Do you want to find out more?

Learn more about NIHR Career
Development opportunities



Learn more about
NIHR Academy



Keep in touch

- Email: personal.awards@nihr.ac.uk
- Call us on 0113 532 8410
- Follow us on X: @NIHRResearch
- Follow us on LinkedIn: <https://www.linkedin.com/showcase/nihr-community/>
- Receive NIHR newsletters, including funding alerts, by signing up at <https://nihr.us14.list-manage.com/subscribe?id=570d86f9cb&u=299dc02111e8a68172029095f>