



Remarkable
research for
healthy ageing

THE DUNHILL MEDICAL TRUST

**Implementing
evidence-based
interventions to
support older
adults'
independence**





What are we looking for?

- **Evidence-based** services / programmes / interventions that can support **older adults'** independence – not the development of new interventions
- Looking to **implement and evaluate at greater scale**, including generating evidence on financial impacts / sustainability etc.
- Proposals **must** involve partners / organisations which could support the longer-term adoption of the intervention(s)



Highlight notice: proposals addressing needs in under-served communities

Social Finance: Delivering scale and sustainability through social investment

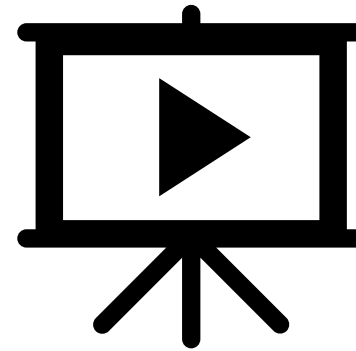
17 July 2024



We work to drive long-lasting, transformational change for people and systems at scale

Working together with a collective of like-minded change-makers, we want to transform the way the NHS does transformation, forging **system wide partnerships** and unlocking capital to change how change is done.

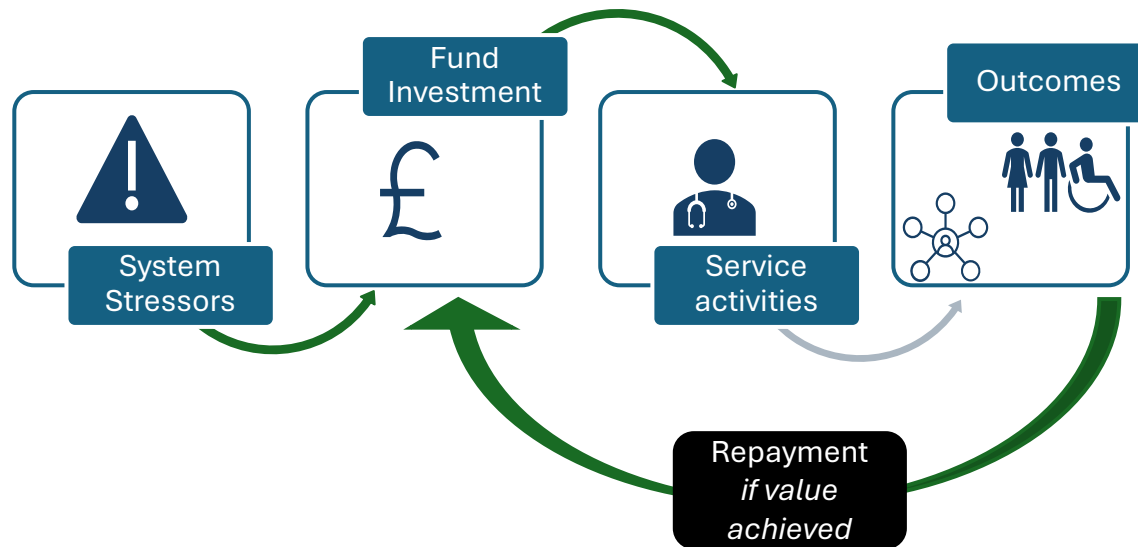
We're pioneering different types of social investment to improve community health and wellbeing that could provide sustainable funding, expert capacity and opportunities to reach and support more people.



[Hear from our partners](#)

Deep partnerships and sector knowledge enable us to achieve this

We have developed an outcomes-based approach....

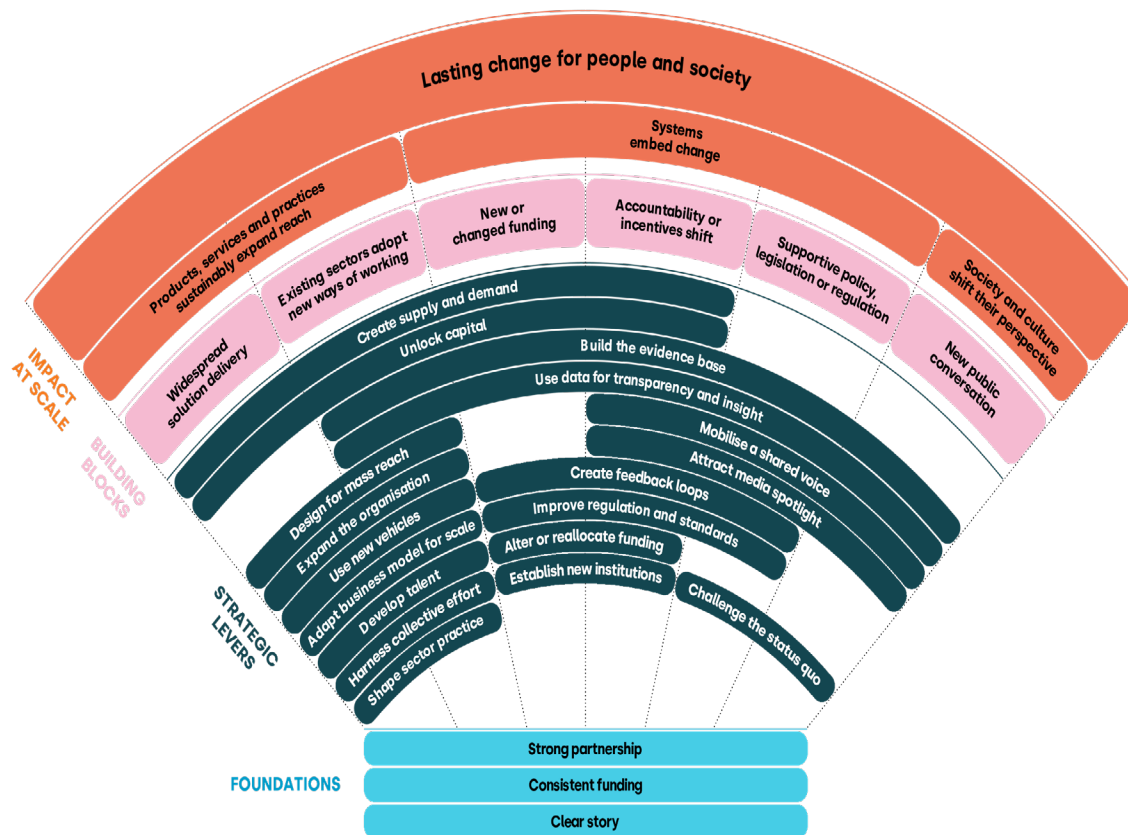


The working model closely examines the **system stressors**, based on the root causes, as well as the requirements for success, and seeks to directly target these through developing personalised care services.

This focusses on **driving outcomes that matter** to both people and the wider system.

...that creates space for health systems to scale innovation

Our Routes to Scale Framework maps essential levers and building blocks



- Our **Routes to Scale** framework helps us think through the foundations, levers and building blocks needed to effect impact at scale.
- We identify a **clear story** what outcomes are we trying to change? Who for, and why?
- We explore scenarios where Social Investment could offer **consistent funding**
- We map and convene partners to build a collective voice
- We work through the strategic levers that could be activated to **reach more people, challenge the status quo, and unlock capital** to improve outcomes for people, communities and systems.

This approach drives long-term sustainability

If you think your proposal could benefit from our approach please get in touch with Dunhill Medical Trust:

grants@dunhillmedical.org.uk

Social Finance would be happy to provide a suitability assessment



Overview of call criteria and application process

The [call guidelines](#) provide further information on the following topics:

- Eligibility criteria
 - Eligible interventions and programmes of work
 - Who can apply
 - Eligible costs
- Application process and timeline
- Assessment process / criteria for each stage

Please read them fully before developing a proposal.



Eligible interventions and programmes of work

- Looking for proposals which could facilitate the longer-term adoption of the intervention(s).
- Welcome interventions that could be adopted / commissioned in a variety of settings.
- Proposals should align with our [key principles for research](#).
- Guidelines provide examples of **ineligible** interventions / programmes.



Who can apply?

- Lead applicant must be based at UK university or other [eligible research organisation](#).
 - May consider a local authority as the lead institution.

- **Must** be at least one adopter partner / organisation within the team.

- Encourage co-applicants and collaborators both from within and beyond academia.

In summary: flexibility as to who is involved in the wider team.



Eligible budget and costs

- **£2.4M** allocated to the call.
- Apply for **up to £1.2M** for a maximum duration of **four years**.

Key points in terms of eligible costs...

- Broadly, will cover the direct costs of the work for research organisations – i.e. not overhead costs.
- But **will** meet the overhead costs of involved community partners / organisations.
- Costs of materials / consumables etc. to implement the intervention(s) will be met.



Timeline and application process

Activity	Date
Call opens	w.c. 8 th July 2024
Expression of interest stage ends	6 th September 2024 (5pm)
Full application stage opens	w.c. 9 th September 2024
Deadline for the full application stage	29 th October 2024 (5pm)
Peer review	October – December 2024
Rebuttal period	9 th – 13 th December 2024
Full applications considered by Research Grants Committee and Expert Panel	4 th February 2025
Interviews for applicants	26 th and 27 th February 2025
Applicants notified of the outcome of the full application stage	Late March / early April 2025



Expression of interest conversations

- **Book in for a conversation [via Calendly](#).**
- Lead applicant and a representative from each adopter partner / organisation **must** be involved.
- Will be asked to provide a presentation (max. 20 mins) as part of the conversation:
 - The intervention(s)
 - The programme of work
 - Approach to PPIE and EDI
 - The proposed team

Followed by time for discussion / questions...





Remarkable
research for
healthy ageing
THE DUNHILL MEDICAL TRUST

Any questions?





Remarkable
research for
healthy ageing
THE DUNHILL MEDICAL TRUST

Thank you for
attending



grants@dunhillmedical.org.uk



[@DunhillMedical](https://twitter.com/DunhillMedical)



The Dunhill Medical Trust



Join our [mailing list](#)

